

Process for Generating ADU Survey IML Using CLI

What We Need

Output Specifications from your device to quote and onboard your spare.

Why This Matters

Learn what happens with the outputs retrieved and why we need the information from these commands at [PIVIT's Sparring Integrity Program](#).

Procedure

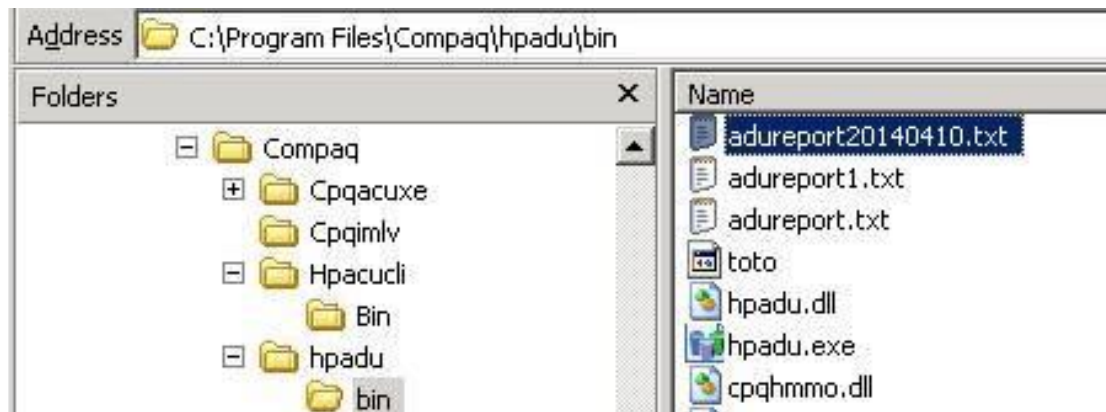
1. ADU Report using CLI: `hpaducli /f filename.extension`

```
C:\Program Files\Compaq\hpadu\bin>
C:\Program Files\Compaq\hpadu\bin>
C:\Program Files\Compaq\hpadu\bin>
C:\Program Files\Compaq\hpadu\bin>
C:\Program Files\Compaq\hpadu\bin>hpaducli -h

hpaducli - produce an ADU report file

Usage: hpaducli [options] /f <filename>
       hpaducli /f <filename>
  /f FILE Specify an output filename
  /r      Include RIS hexdump in output
  /s      Suppress SOB in output
  /h      Print this help text and exit
  /v      Print the version number and exit

C:\Program Files\Compaq\hpadu\bin>hpaducli /f adureport20140410.txt
C:\Program Files\Compaq\hpadu\bin>
```



2. Survey using CLI: hpdiags -p

```
C:\hp\hpdiags>
C:\hp\hpdiags>
C:\hp\hpdiags>hpdiags -h
HP Insight Diagnostics Version 7.9.0.2359A
Copyright (c) 2002, 2005 Hewlett-Packard Development Company, L.P.
Syntax: hpdiags [options]
Valid options:

-l languageCode  options: en, fr, it, de, es, ja (Default: en)

-v [Level]      Verbosity level of output between 1 and 5.
                where 1 is the most terse level and 5 is the most verbose.
                The default value is set to 5.

-s mmhhddMMDD  Schedule automatic execution of survey captures.
                mm=minute(0-59), hh=hour(0-23), dd=day(1-31),
                MM=month(1-12), DD=weekday(0-6)
                All fields must be two digits (e.g. 02 instead of 2).
                Use a single '*' for don't care fields.
                NOTE: If you use '*' you must use double-quotes around the
                date/time value. (e.g. -s "0023***")

-u             Unschedule automatic execution of survey captures.

-c FILE1 [FILE2] Compare a survey file to the current configuration
                or, if two files are specified, compare the files.

-t             Output to the terminal. May not be used with -o.

-p             Specify output file format as plain text, instead of XML.
                Only applies to survey capture.
                Off by default.

-o FILE       Specify output file name. By default, a file name is formed
                using the current date and time in this format:
                "surveyYYYY-MM-DD-hh-mm-ss.xml"
                (YYYY=year, MM=month, DD=day, hh=hour, mm=minute, ss=second)
                May not be used with -t.

-f             Overwrite output file if it already exists.
                NOTE: If no -o option is specified this option is ignored.

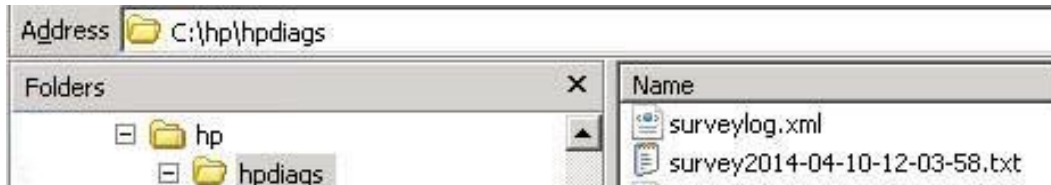
-rq           Run an unattended quick test of all devices.

-rc           Run an unattended complete test of all devices.

-rd           Run a diagnosis of all diagnosable devices.

-? , -h      Display this help message.

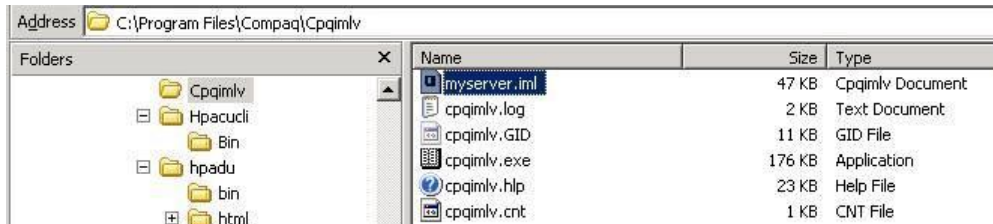
C:\hp\hpdiags>hpdiags -p
HP Insight Diagnostics Version 7.9.0.2359A
Copyright (c) 2002, 2005 Hewlett-Packard Development Company, L.P.
System configuration capture completed (100%)
C:\hp\hpdiags>
```



3. IML using CLI: cpqimlv /save :imlfile

```
C:\Program Files\Compaq\Cpqimlv>
C:\Program Files\Compaq\Cpqimlv>
C:\Program Files\Compaq\Cpqimlv>
C:\Program Files\Compaq\Cpqimlv>cpqimlv /save:myserver

C:\Program Files\Compaq\Cpqimlv>
C:\Program Files\Compaq\Cpqimlv>
```



4. Share file with OneCall Support:

<https://onecall.pivitaglobal.com/file-upload/quote>